

WHAT TO DO WITH MY BUDDY/ NEWBIE IN VÄXJÖ?

- Join an event arranged by any of the student associations!
- Visit a museum! Check out Smålands museum, or the House of Emigrants.
- Play disc golf by the Teleborg castle. It is completely free! (own frisbees required)
- Feeling the rhythm in your bones? Drop by the student pubs Sivans or Slottsstallarna.



WHAT TO DO WITH MY BUDDY/ NEWBIE IN KALMAR?

- Explore the cafes in the city centre.
- Arrange a day trip to Öland & visit the castle ruins. Before you leave try tasty kroppkakor. (Psst... Arontorps has the best ones!)
- Intrigued by history? Pay a visit to the Kalmar Län-museum. Or Kalmar Art Museum for the art lovers.
- Ikea is just a bus ride away from campus, for those that need home supplies- or a hearty meal of Swedish meatballs!



CONTACT INFORMATION

INTERNATIONAL STUDENT COORDINATOR

Karin Siöö

EMAIL
studcoord@linnek.se

WEBSITE
buddyprogram.lnu.se

INSTAGRAM
@buddy_lnu



BUDDY PROGRAM

CURIOUS?

SOCIAL?

**READY FOR NEW
PERSPECTIVES?**



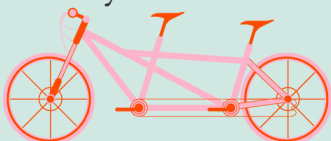


WHAT IS THE BUDDY PROGRAM?

In the Buddy program local students (buddies) are paired with new international students (newbies).

Students from all over the world begin studies at LnU. When you have been matched, make an effort to learn something you didn't already know about the newbie's home country.

As a buddy, you help your newbie in different ways, by answering questions, showing campus surroundings, and explain what the student community looks like.



HOW TO SUPPORT YOUR NEWBIE?

- Invite your newbie over for a “fika” or meet up at any of the campus cafes.
- Team up to go to the supermarket. Point out the differences between milk and yogurt etc.

Explain:

- How to sign up for exams, getting memberships, tickets to parties and events
- How to get a library card, manage copying, getting a router, using public transport etc.
- How to seek medical care
- What is Academic quarter?
- Explain pre-and after parties



HOW DO I BENEFIT FROM JOINING THE BUDDY PROGRAM?

The program offers an opportunity to learn and improve your language skills, learn of new cultures and customs, have fun, network and broaden your world view or even challenging your thinking!

After one semester as a buddy, you may get a certificate. With it, you gain merit points to for your application for exchange studies.

WHO WOULD YOU LIKE TO CONNECT WITH?



HEJ!

¡HOLA!

أَهْلًا



SCAN ME

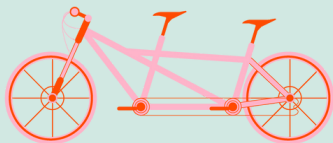


CULTURAL DIFFERENCES

Being a buddy often leads to experiencing cultural differences.

Sometimes they are big, sometimes insignificant. Most can be overcome by asking questions, explaining, and trying to see things from each other's perspective. What's different isn't necessarily wrong. Look at it as a way to grow!

Did you become a buddy to improve your language skills, and your newbie wants to learn Swedish? Take turns, so that both you and your newbie gain something!



THE INTERNATIONAL STUDENTS - WHO ARE THEY?

International students joining the Buddy program as newbies can be exchange students, program students (that study a full bachelor), master students (that study 1 or 2 years), or students studying individual courses given in English.

International students staying longer than 1 semester may also become buddies, making the Buddy Program even more international!



ESN SECTIONS AT LNU & THEIR EVENTS

On both campuses there are ESN sections that arrange events attracting many international students. ESN is an interest association open to all students at the uni.

ESN KALMAR

@esnkalmar on Instagram

ESN VÄXJÖ

@esn_vaxjo on Instagram

BUDDY PROGRAM FOR DIVERSITY



NOT "CLICKING" WITH YOUR NEWBIE?

It is not the end of the world if you don't become good friends. After all, we know very little about buddies and newbies joining the Buddy Program. It is however worth to make an effort.

During fall semesters, there is often a shortage of buddies. This means that if you cannot make it work, there is likely another newbie hoping to get a buddy.



DO YOU HAVE IDEAS ON HOW TO IMPROVE THE BUDDY PROGRAM?

Fill out the survey shared at the end of every semester, and/or reach out to us!

**STOP THINKING ABOUT
JOINING!
JUST DO IT!**



**PARTNERS TO THE
BUDDY PROGRAM**



INTERNATIONAL COMMITTEE
EHVS



**SAID BY FORMER
BUDDIES:**

**"I HAVE
LEARNT SO
MUCH BEING A
BUDDY"**

**"BEING A
BUDDY MADE
ME GROW"**

**"MY ENGLISH
HAS IMPROVED
A LOT"**

**"NOW I HAVE FRIENDS
AND CONTACTS ALL
OVER THE WORLD"**